

0 -0,29 ▼ -1,99% PG 61,36 -0,64 ▼ -1,03% UTX 80,75 -2,14 ▼ -2,58% WMT 53,06 +0,39 ▲ +0,74% XOM 81,58 -2,80 ▼ -3,32% JPM 45,45 -1,11 ▼ -2,38% BA 71,66 -0,43 ▼ -0,60% CSCO 17,94 -0,18 ▼ -0,99% KFT 31 edit

SP-500 - 4 Hour

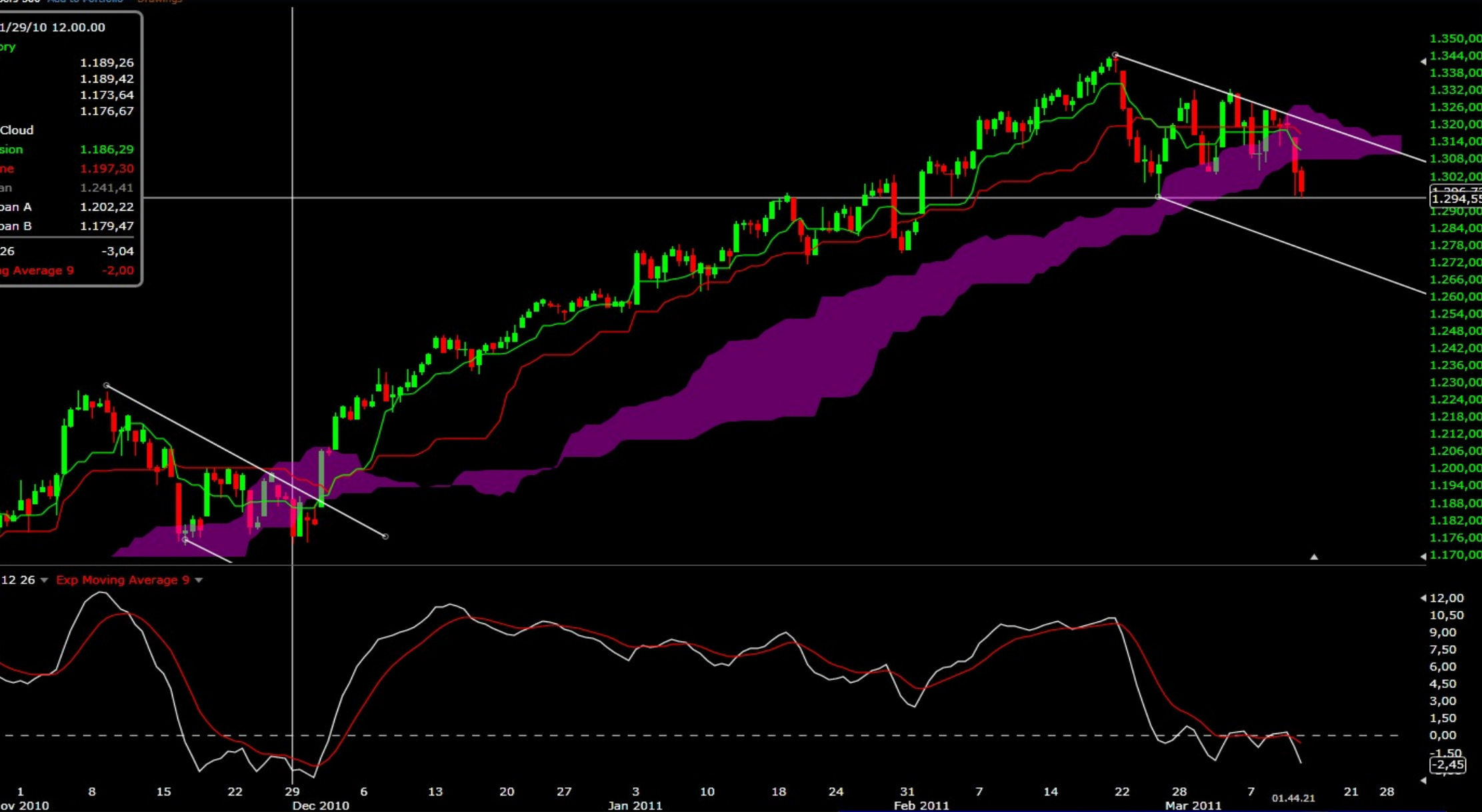
Add Indicator | 4 Hour | Settings |

Last 15 minutes estimated for SP-500 More Info... ↓ -23,29 (-1,76%)

1/29/10 12.00.00

1.189,26
1.189,42
1.173,64
1.176,67

Cloud
sion 1.186,29
ne 1.197,30
an 1.241,41
an A 1.202,22
an B 1.179,47
26 -3,04
g Average 9 -2,00



12 26 ▼ Exp Moving Average 9 ▼

1 8 15 22 29 Dec 2010 6 13 20 27 3 10 18 24 31 Feb 2011 7 14 22 28 7 01.44.21 21 28

5Y 1Y YTD 6M 3M 1M 1W 1D Today