

Advanced GET SEARCH

TYPE – 1 (BUY)

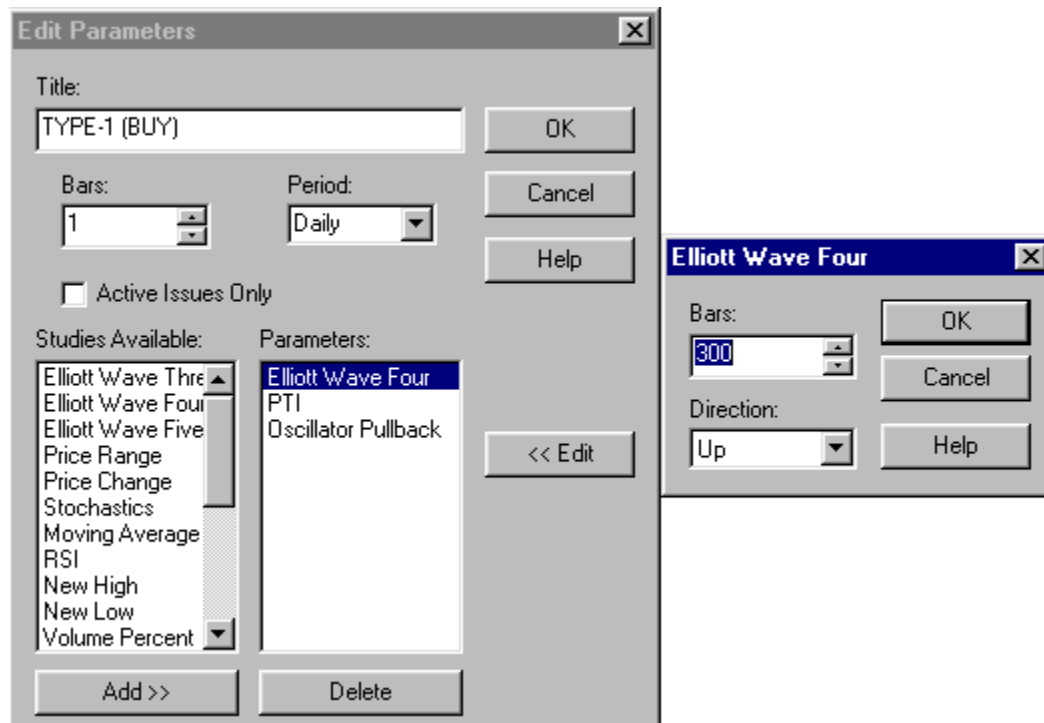
The screenshot shows a software window titled "Edit Parameters" with a close button (X) in the top right corner. The window contains the following elements:

- Title:** A text box containing "TYPE-1 (BUY)".
- Bars:** A spinner box set to "1".
- Period:** A dropdown menu set to "Daily".
- Active Issues Only:** An unchecked checkbox.
- Studies Available:** A list box containing: Elliott Wave Three, Elliott Wave Four, Elliott Wave Five, Price Range, Price Change, Stochastics, Moving Average, RSI, New High, New Low, and Volume Percent.
- Parameters:** A list box containing: Elliott Wave Four, PTI, and Oscillator Pullback.
- Buttons:** "OK", "Cancel", "Help", "<< Edit", "Add >>", and "Delete".

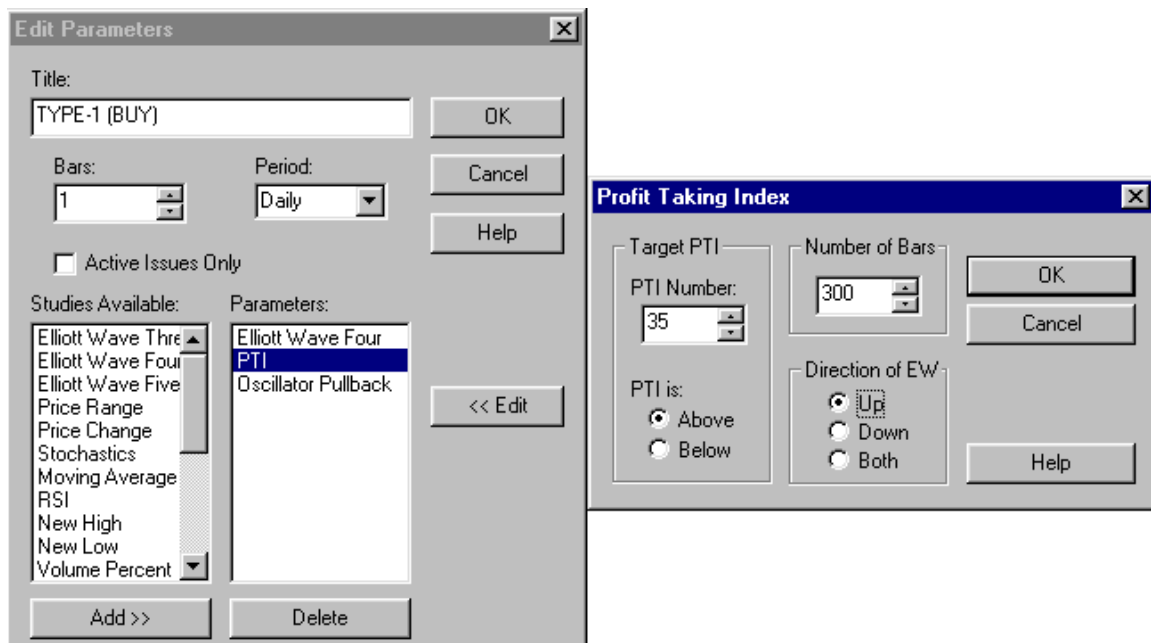
Rules For Type-1 Search

1. Must be in a Wave 4 Pullback.
2. Profit Taking Index Must be > 35
3. Elliott Oscillator Must be < or = zero line.

Edit Wave 4 Parameters



Edit Profit Taking Index



Edit Oscillator Pullback

The image shows two overlapping software dialog boxes. The 'Edit Parameters' dialog is on the left, and the 'Oscillator Pullback' dialog is on the right.

Edit Parameters

Title: TYPE-1 (BUY) [OK] [Cancel] [Help]

Bars: 1 [Period: Daily] [Active Issues Only] [Add >>] [Delete]

Studies Available: Elliott Wave Three, Elliott Wave Four, Elliott Wave Five, Price Range, Price Change, Stochastics, Moving Average, RSI, New High, New Low, Volume Percent

Parameters: Elliott Wave Four, PTI, **Oscillator Pullback** [<< Edit]

Oscillator Pullback

Moving Averages: Mov Avg 1: 5, Mov Avg 2: 35 [OK] [Cancel]

Pullback: Min %: 90, Max %: 140

Direction: ☒ Up, ☐ Down, ☐ Both

Breakout Bands: Strength: 100 [Help]